

- LEGEND**
- APPLICATION SITE
 - LAND UNDER THE APPLICANT'S CONTROL
 - FAREHAM BOROUGH COUNCIL BOUNDARY
 - PUBLIC FOOTPATH
 - PUBLIC BRIDLEWAY
 - PUBLIC BYWAY
 - NATIONAL CYCLE NETWORK
 - LONG DISTANCE TRAIL
 - ANCIENT WOODLAND
 - COUNTRY PARK
 - LISTED BUILDINGS
 - LOCAL NATURE RESERVE
 - NATIONAL NATURE RESERVE
 - SPECIAL AREA OF CONSERVATION
 - SCHEDULE MONUMENTS
 - SPECIAL PROTECTION AREAS
 - SITE OF SPECIAL SCIENTIFIC INTEREST
- FAREHAM BOROUGH LOCAL PLAN PART 2 (2015)**
- CONSERVATION AREAS
 - EMPLOYMENT ALLOCATIONS
 - HOUSING ALLOCATIONS
 - STRATEGIC GAP
 - EXISTING OPEN SPACE
 - PUBLIC OPEN SPACE ALLOCATIONS
- FAREHAM DRAFT BOROUGH LOCAL PLAN (2017)**
- EMPLOYMENT ALLOCATIONS
 - HOUSING ALLOCATIONS
 - PUBLIC OPEN SPACE ALLOCATIONS



SLR global environmental solutions

ASPECT HOUSE
ASPECT BUSINESS PARK
BENNERLEY ROAD
NOTTINGHAM, NG6 8WR
T: 01159 647280
F: 01159 751576
www.slrconsulting.com

POSBROOK LANE, TITCHFIELD

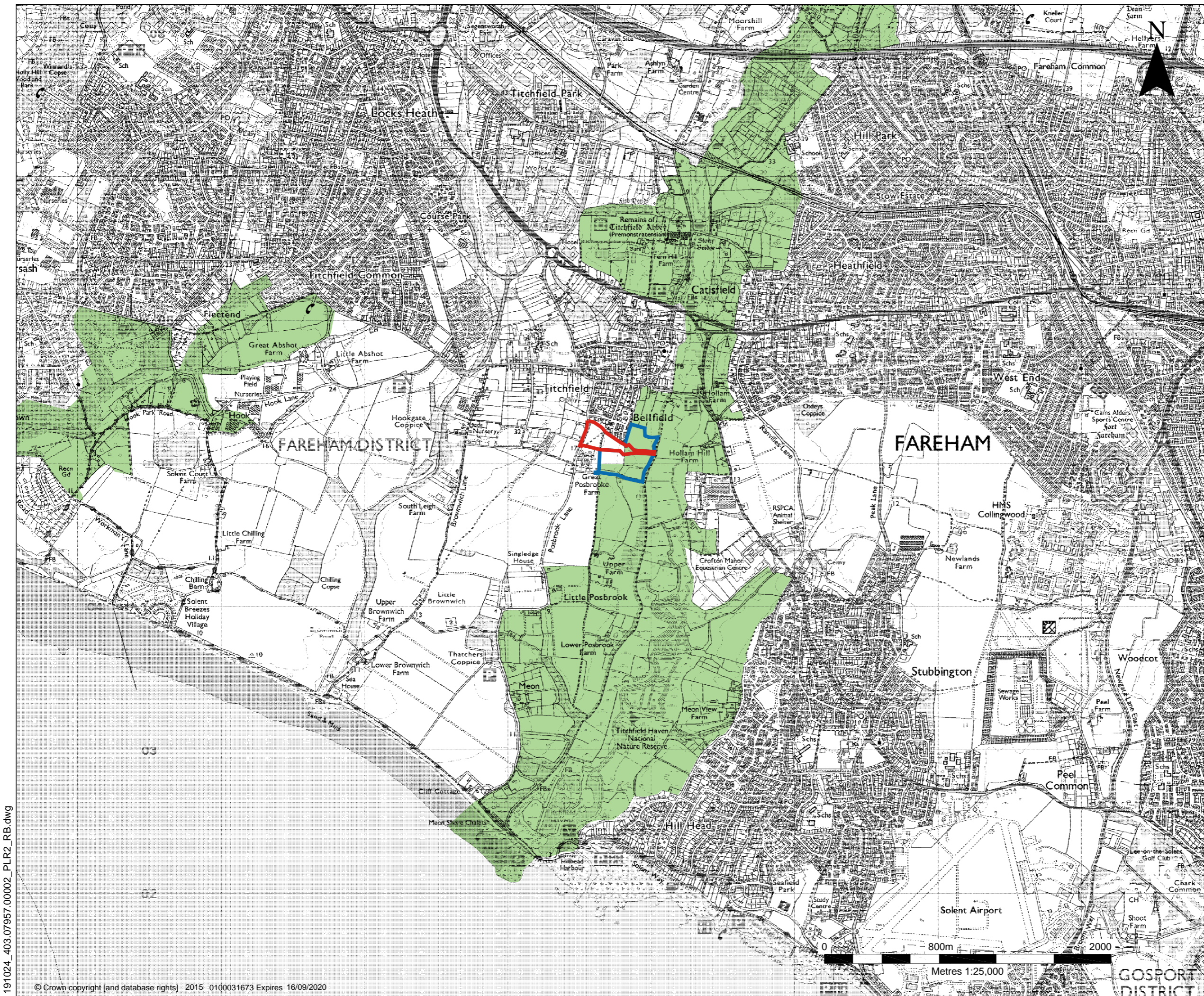
LANDSCAPE AND VISUAL
IMPACT ASSESSMENT

DESIGNATIONS PLAN




PLR-1

Scale 1:25,000 @ A3 Date OCTOBER 2019

191024_403.07957.00002_PLR1_RB.dwg



LEGEND

-  SITE APPLICATION
-  LAND UNDER THE APPLICANT'S CONTROL
-  PROPOSED AREAS OF SPECIAL LANDSCAPE QUALITY



SLR global environmental solutions

ASPECT HOUSE
ASPECT BUSINESS PARK
BENNERLEY ROAD
NOTTINGHAM, NG6 8WR
T: 01159 647280
F: 01159 751576
www.slrconsulting.com

**LAND EAST OF POSBROOK LANE
TITCHFIELD**

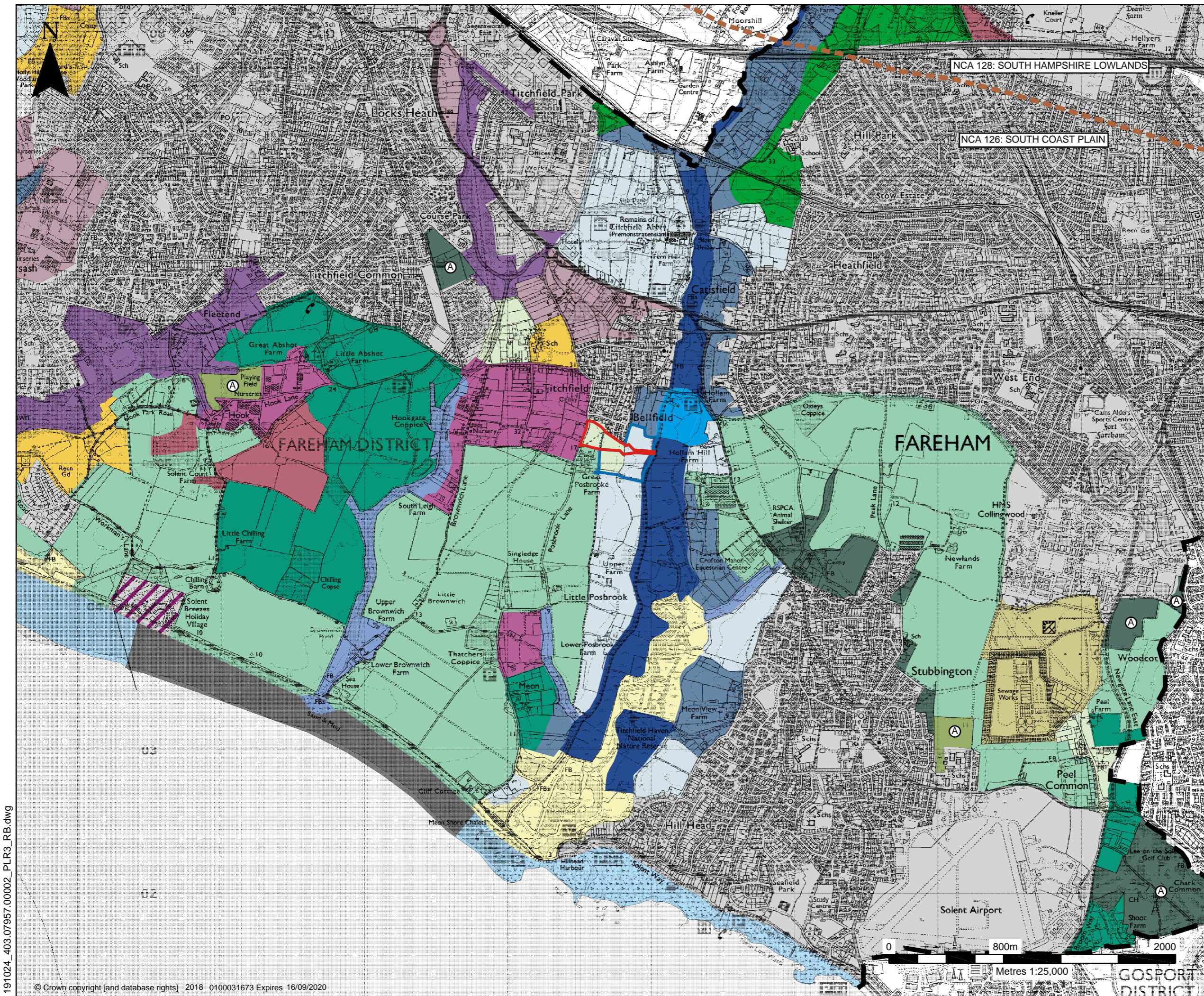
**LANDSCAPE AND VISUAL IMPACT
ASSESSMENT**

**PROPOSED AREAS OF SPECIAL
LANDSCAPE QUALITY**

PLR-2

Scale 1:25,000 @ A3 Date OCTOBER 2019

191024_403.07957.00002_PLR2_RB.dwg



- LEGEND**
- APPLICATION SITE
 - LAND UNDER THE APPLICANT'S CONTROL
 - FAREHAM BOROUGH COUNCIL BOUNDARY
 - NCA BOUNDARY
- FAREHAM LANDSCAPE ASSESSMENT (2017)**
- Mixed Farmland & Woodland: Small Scale
 - Open Floodplain Farmland
 - Enclosed Floodplain Farmland
 - Horticulture & Smallholdings: Small Scale
 - Horticulture & Smallholdings: Large Scale
 - Wooded Valley: Heath Associated
 - Open Valley Side
 - Enclosed Valley Side
 - Small Scale Enclosed Valley
 - Marsh, ReedsWamp & Brackish Lagoon
 - Open Coastal Plain: Weak Structure
 - Open Coastal Plain: Strong Structure
 - Open Coastal Plain: Fringe Character
 - Enclosed Coastal Plain
 - A Open Coastal Amenity Land
 - A Enclosed Coastal Amenity Land
 - Open Estuary
 - Parkland and Grounds
 - Cliff Coastline
 - Recolonising Landscape
 - Airfields and Large Utility Sites
 - Urban: Chalet/Caravan Park
 - Land within urban settlement boundary



SLR global environmental solutions

ASPECT HOUSE
ASPECT BUSINESS PARK
BENNERLEY ROAD
NOTTINGHAM, NG6 8WR
T: 01159 647280
F: 01159 751576
www.slrconsulting.com

LAND EAST OF POSBROOK LANE
TITCHFIELD

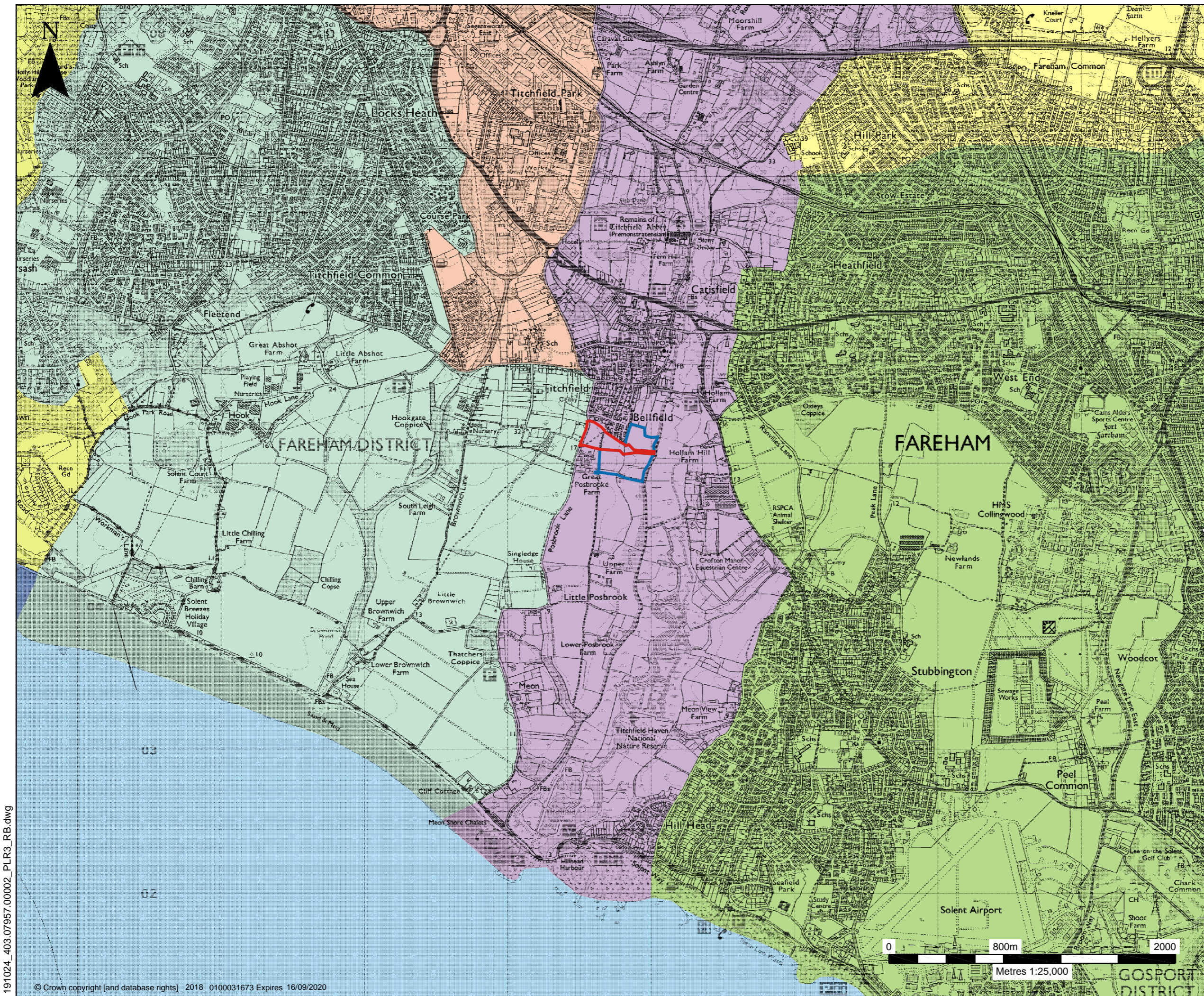
LANDSCAPE AND VISUAL IMPACT
ASSESSMENT

LANDSCAPE CHARACTER PLAN

PLR-3A

Scale: 1:25,000 @ A3 Date: OCTOBER 2019

191024_403.07957.00002_PLR3_RB.dwg



LEGEND

- APPLICATION SITE
- LAND UNDER THE APPLICANT'S CONTROL

HAMPSHIRE LANDSCAPE ASSESSMENT (2012)

- 2e: Forest of Bere West
- 3d: Hamble Valley
- 3e: Meon Valley
- 8i: Portsdown Hill Open Downs
- 9e: Chilling Brownwich and Locks Heath Coastal Plain
- 9f: Gosport and Fareham Coastal Plain
- 11b: Southampton Water
- 11c: Eastern Solent



SLR global environmental solutions

ASPECT HOUSE
ASPECT BUSINESS PARK
BENNERLEY ROAD
NOTTINGHAM, NG6 8WR
T: 01159 647280
F: 01159 751576
www.slrconsulting.com

**LAND EAST OF POSBROOK LANE
TITCHFIELD**

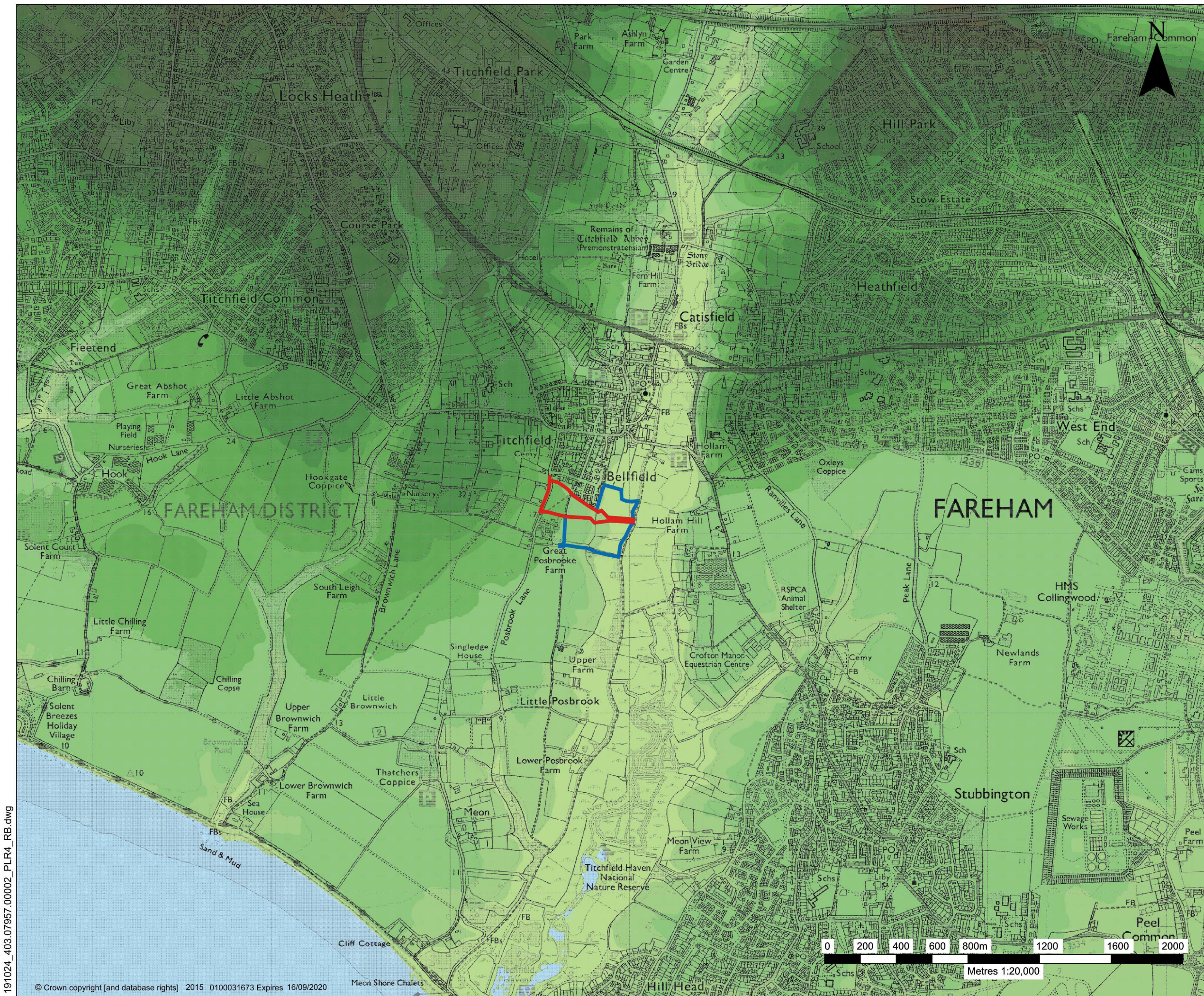
**LANDSCAPE AND VISUAL IMPACT
ASSESSMENT**

LANDSCAPE CHARACTER PLAN

PLR-3B

Scale 1:25,000 @ A3	Date OCTOBER 2019
------------------------	----------------------

191024_403.07957.00002_PLR3_RB.dwg




LEGEND

- APPLICATION SITE
- LAND UNDER THE APPLICANT'S CONTROL


TOPOGRAPHICAL HEIGHT RANGE (m.AOD)

- 50m +
- 45 - 50m
- 40 - 45m
- 35 - 40m
- 30 - 35m
- 25 - 30m
- 20 - 25m
- 15 - 20m
- 10 - 15m
- 5 - 10m
- 0 - 5m
- 0m -





Foreman Homes
LOVE IT. LIVE IT.



SLR
global environmental solutions

ASPECT HOUSE
ASPECT BUSINESS PARK
BENNERLEY ROAD
NOTTINGHAM, NG6 8WR
T: 01159 647280
F: 01159 751576
www.sirconsulting.com

**LAND EAST OF POSBROOK LANE
TITCHFIELD**

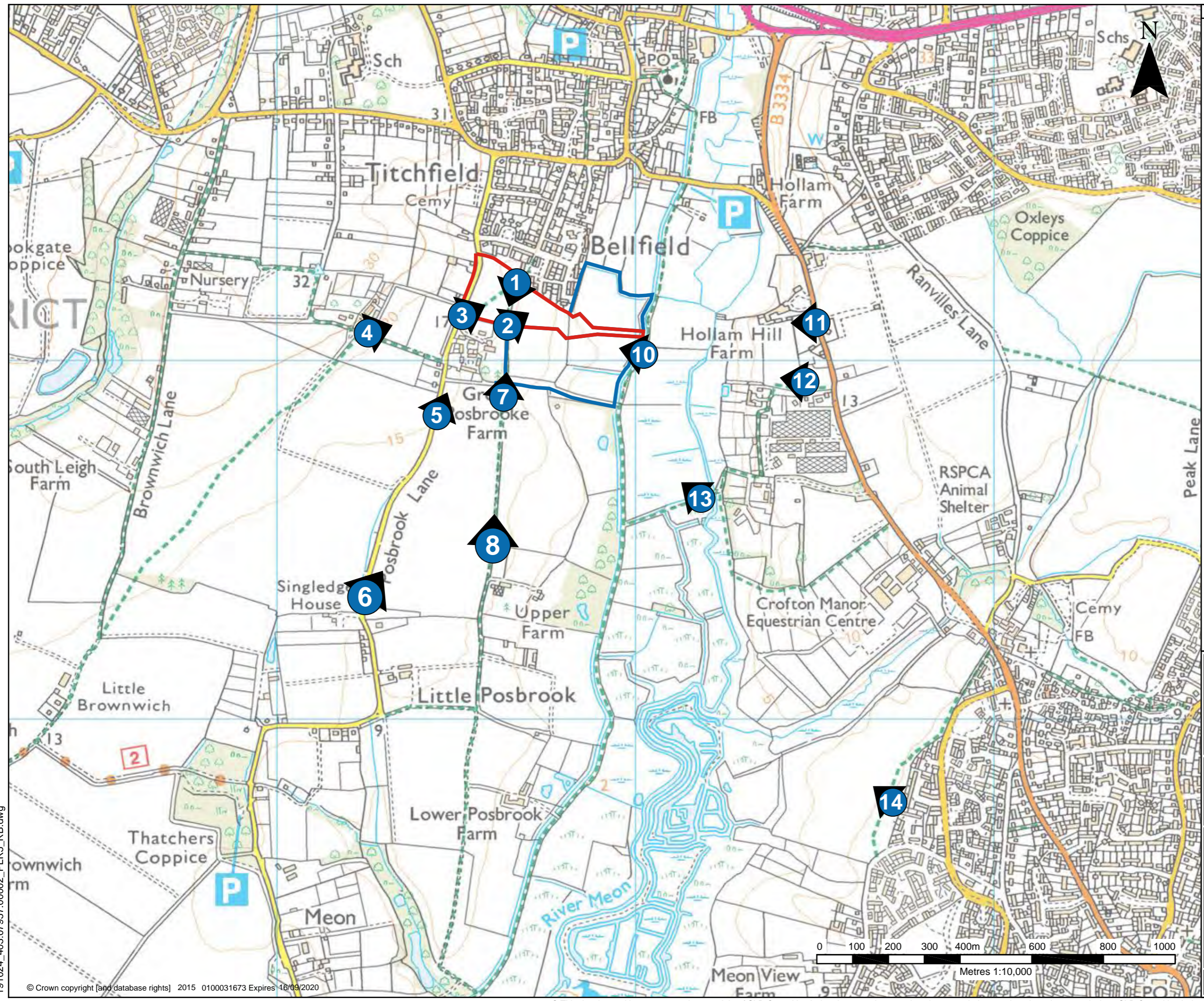
**LANDSCAPE AND VISUAL IMPACT
ASSESSMENT**

TOPOGRAPHICAL SURVEY

PLR-4

Scale 1:20,000 @ A3	Date OCTOBER 2019
------------------------	----------------------

191024_403.07957.00002_PLR4_RB.dwg



LEGEND

- SITE APPLICATION
- LAND UNDER THE APPLICANT'S CONTROL

VIEWPOINTS

- VIEWPOINT



SLR global environmental solutions

ASPECT HOUSE
ASPECT BUSINESS PARK
BENNERLEY ROAD
NOTTINGHAM, NG6 8WR
T: 01159 647280
F: 01159 751576
www.slrconsulting.com

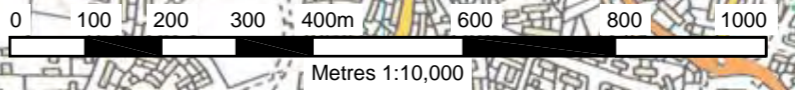
LAND EAST OF POSBROOK LANE
TITCHFIELD

LANDSCAPE AND VISUAL IMPACT
ASSESSMENT

VIEWPOINT PLAN

PLR-5

Scale 1:10,000 @ A3 Date OCTOBER 2019



191024_403.07957.00002_PLR5_RB.dwg

© Crown copyright [and database rights] 2015 0100031673 Expires 16/09/2020

© This drawing and its content are the copyright of SLR Consulting Ltd and may not be reproduced or amended except by prior written permission. SLR Consulting Ltd accepts no liability for any amendments made by other persons.